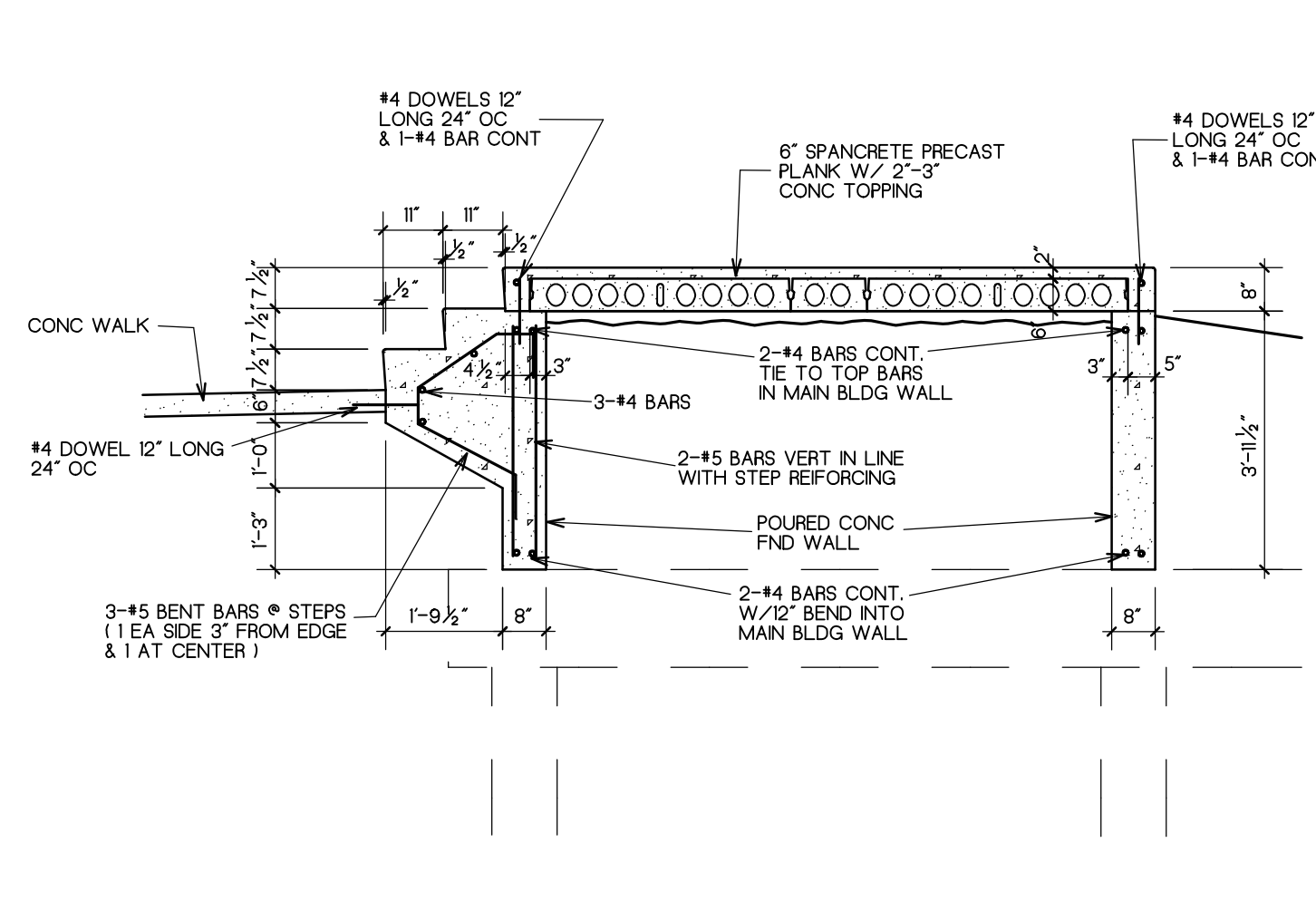
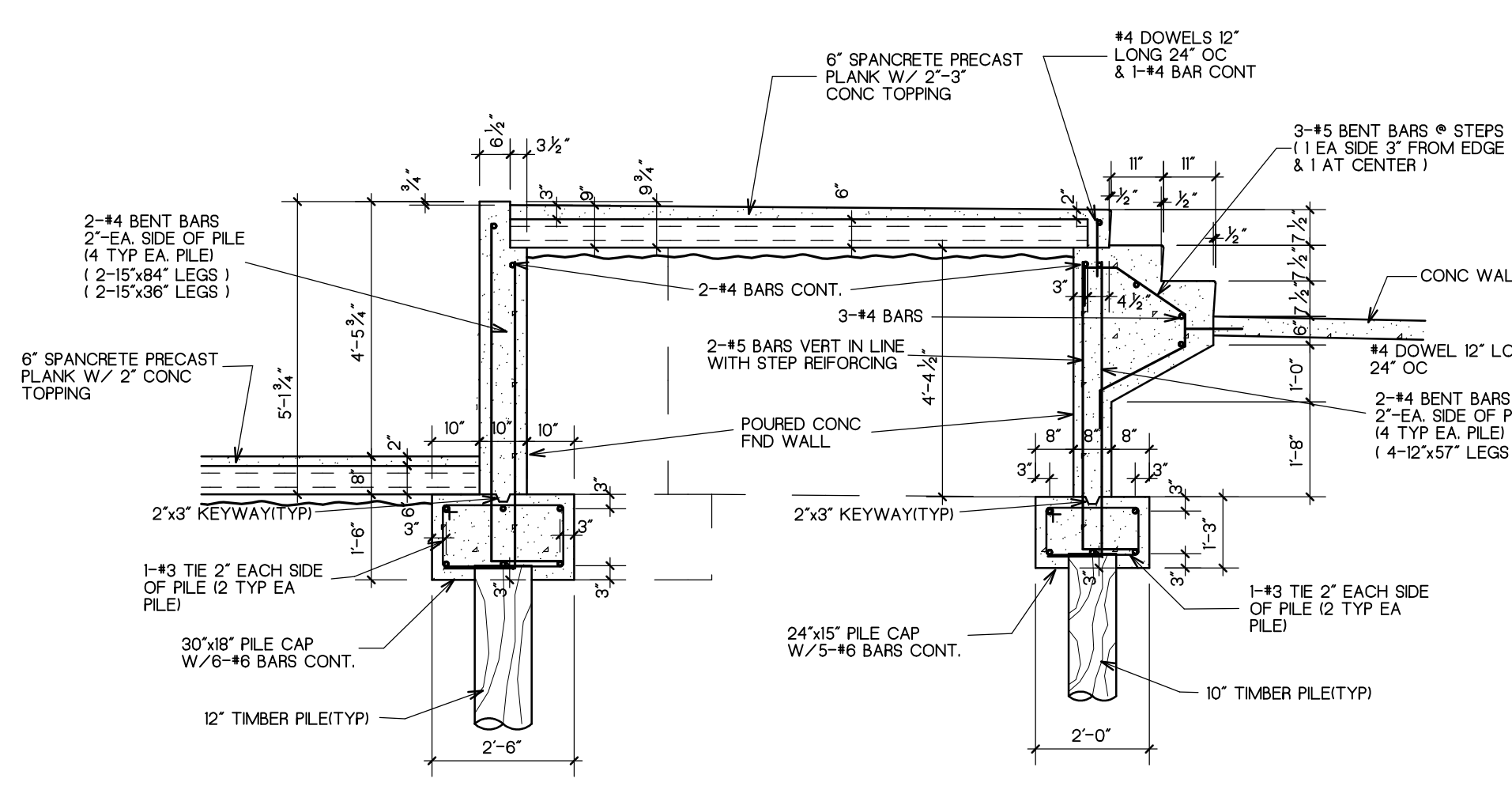


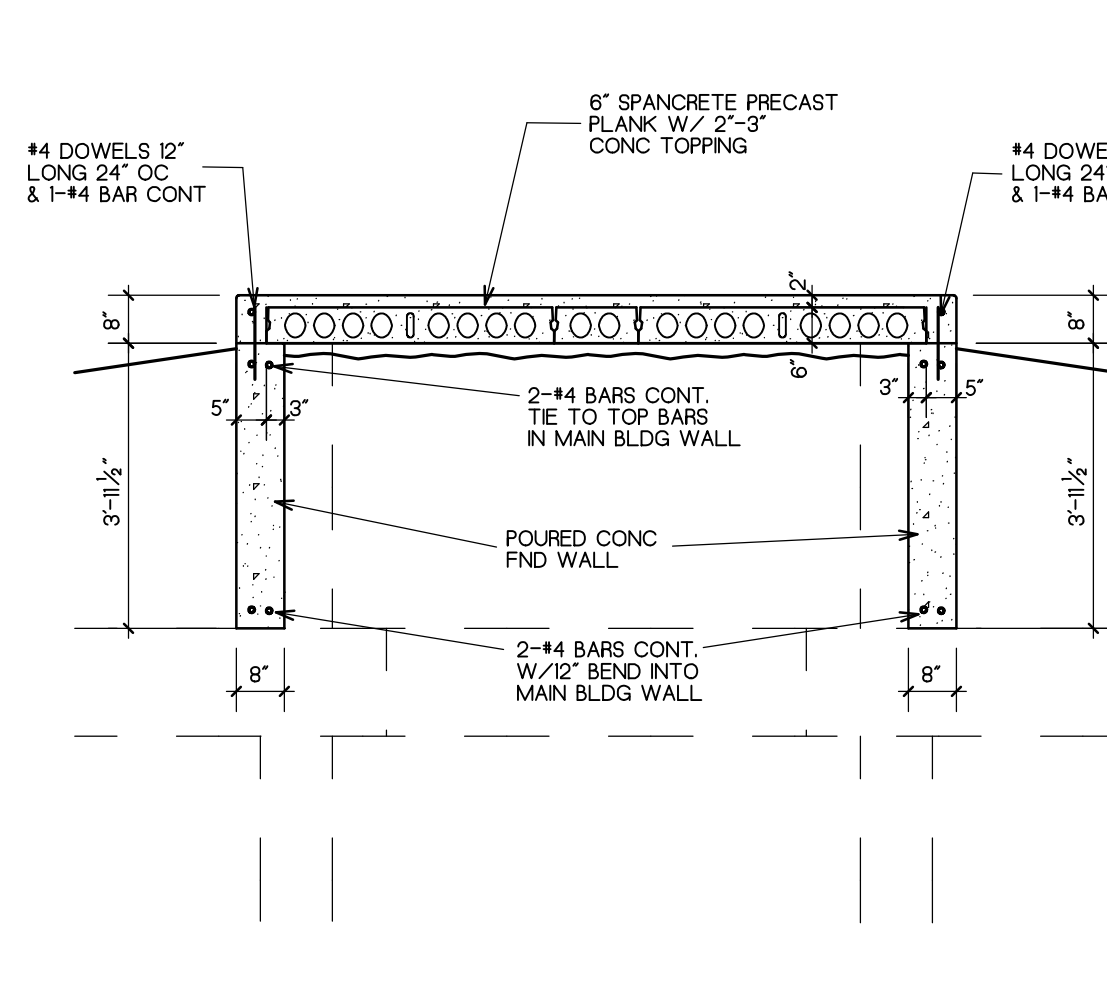
DETAIL D23  
SCALE: 3/8"=1'-0"



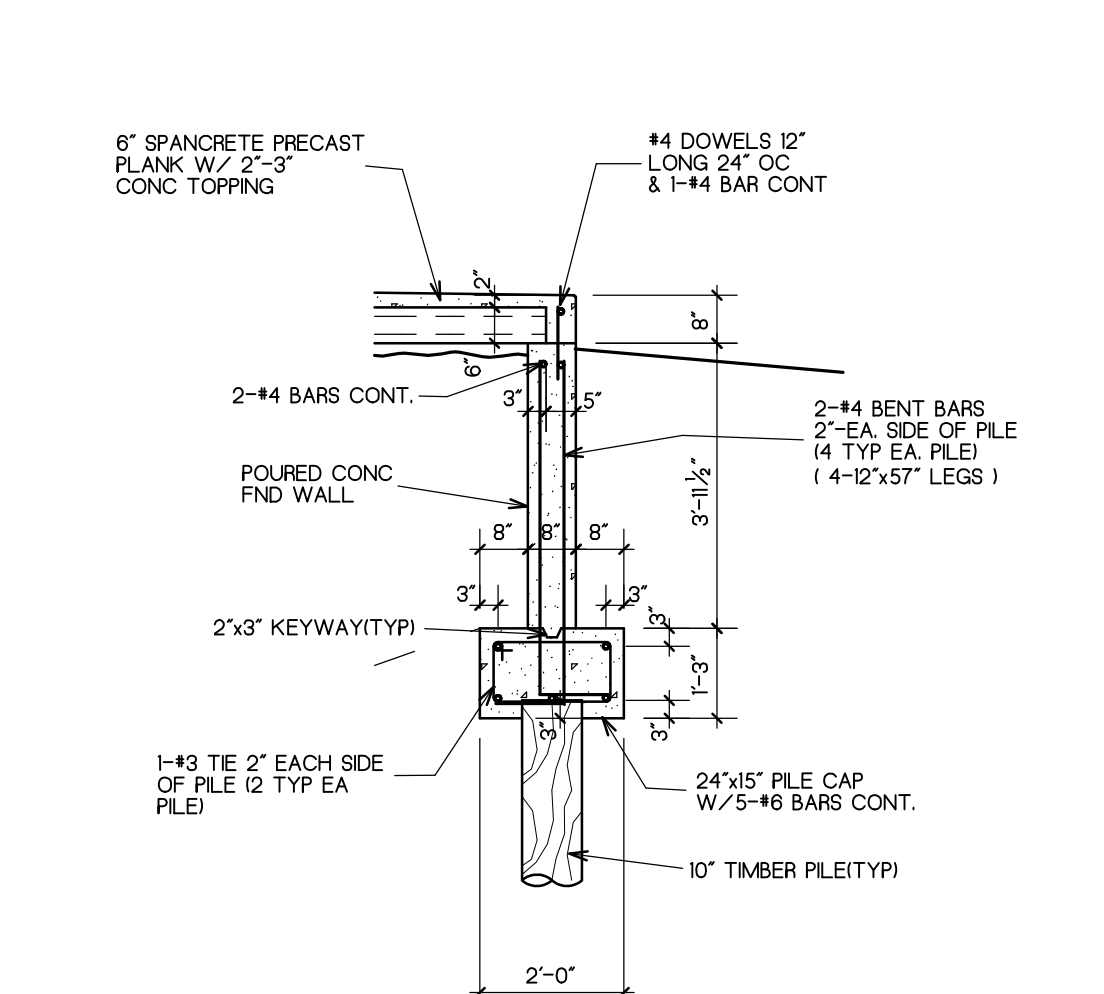
DETAIL D24  
SCALE: 3/8"=1'-0"



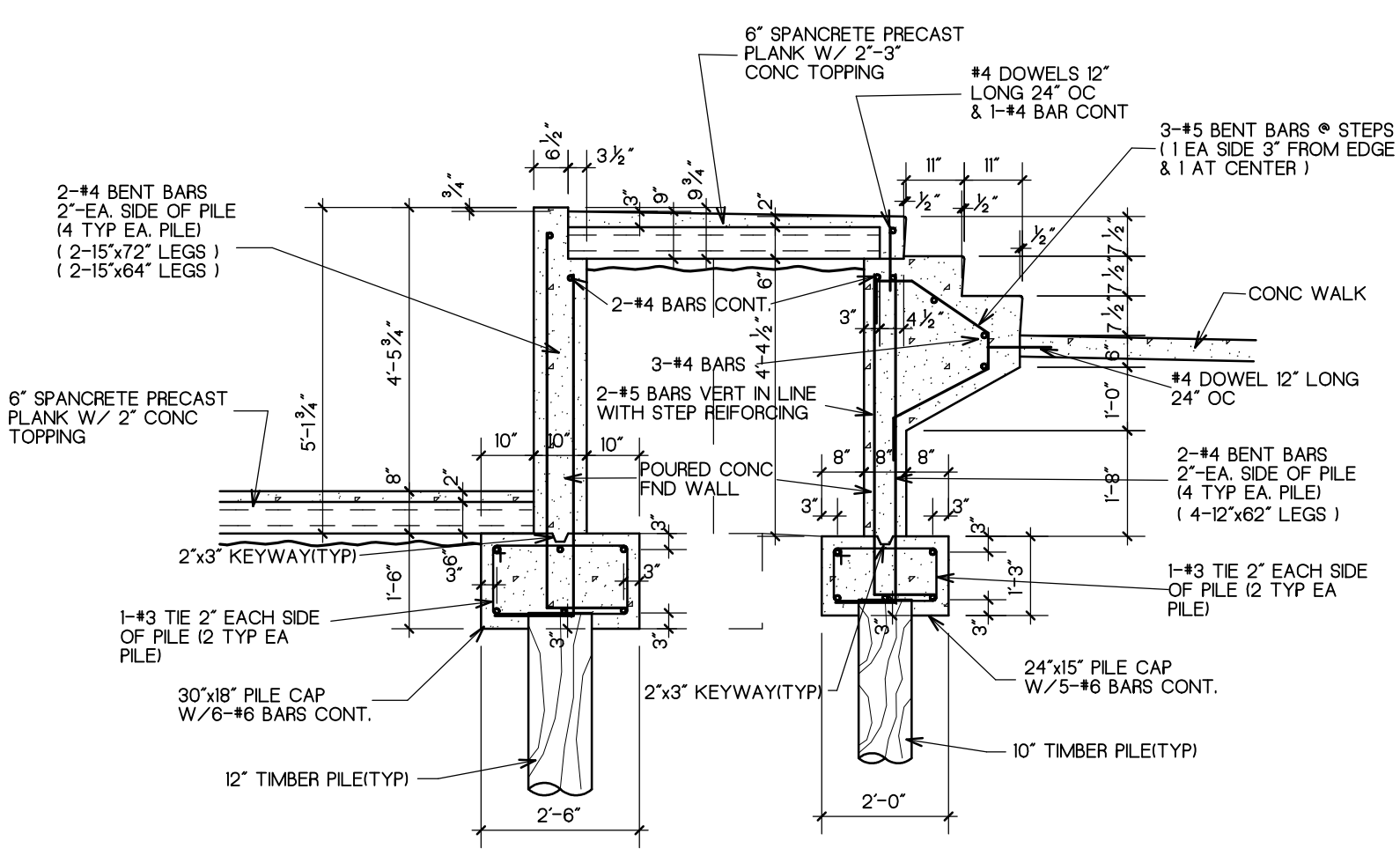
DETAIL D25  
SCALE: 3/8"=1'-0"



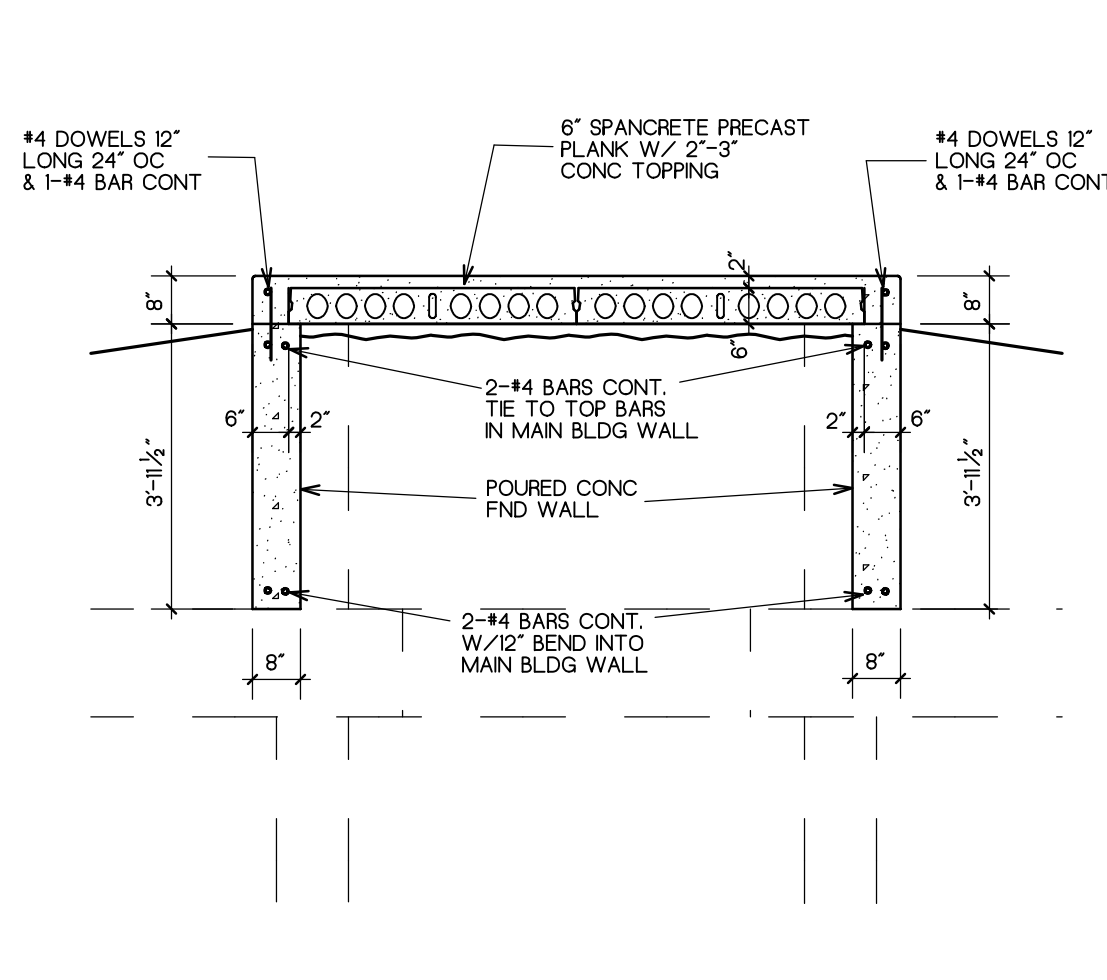
DETAIL D26  
SCALE: 3/8"=1'-0"



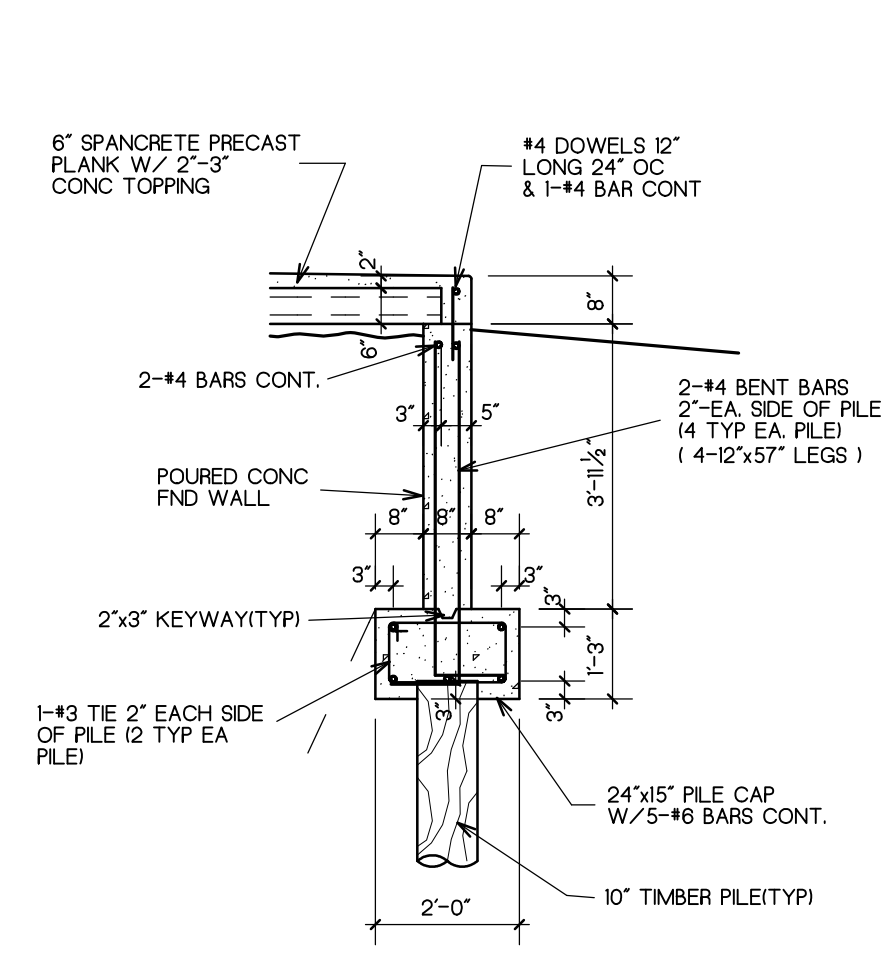
DETAIL D27  
SCALE: 3/8"=1'-0"



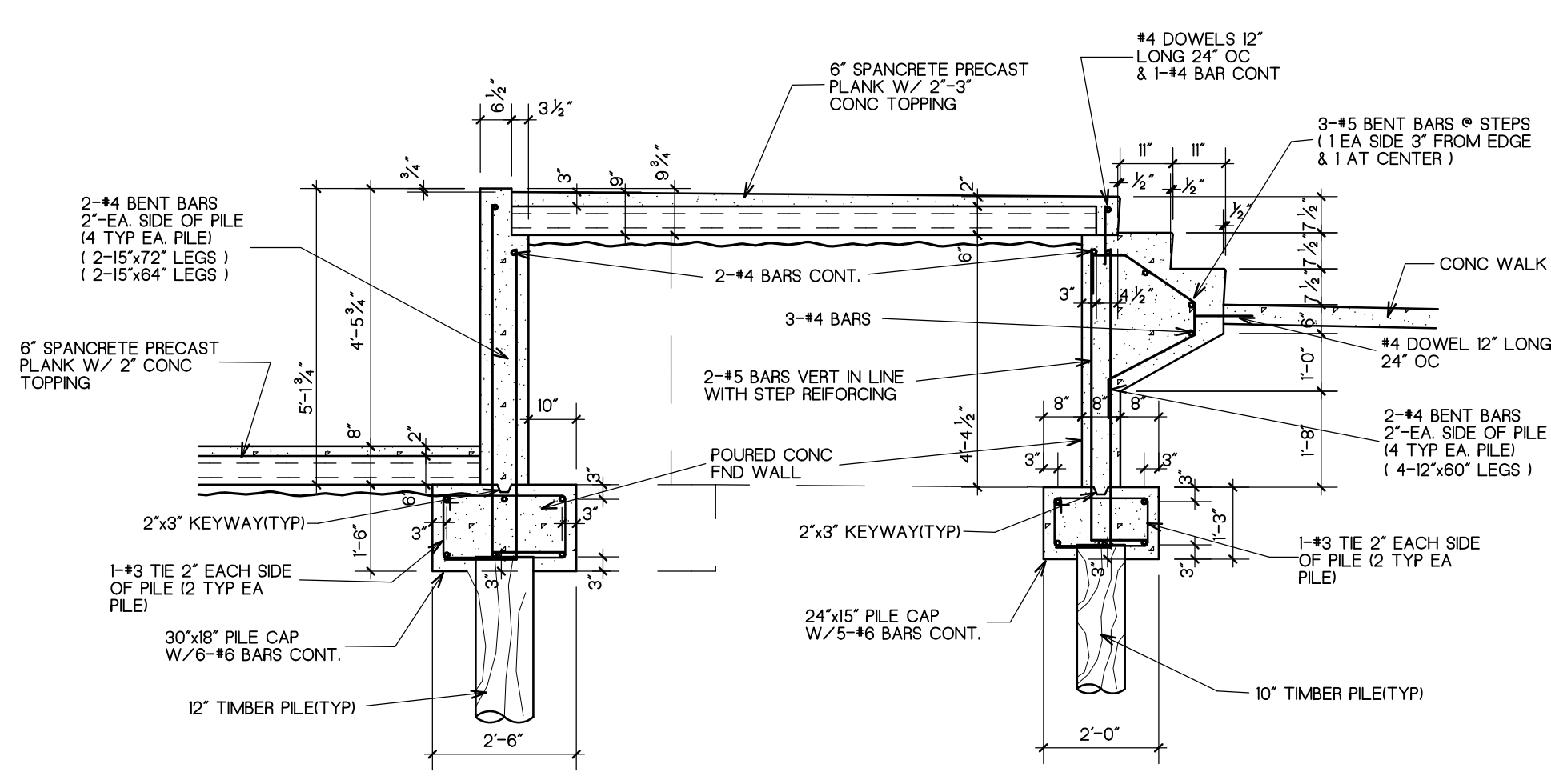
DETAIL D28  
SCALE: 3/8"=1'-0"



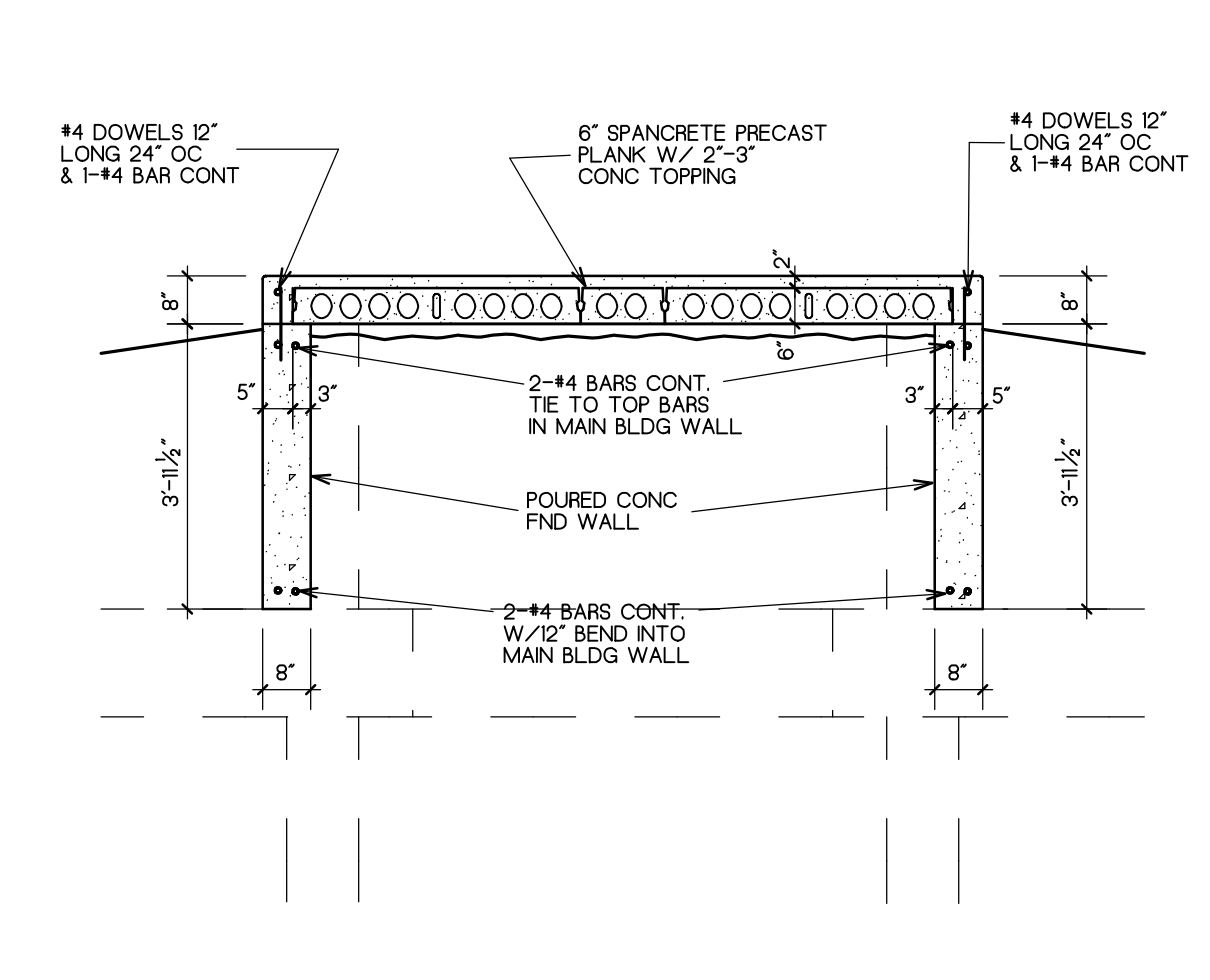
DETAIL D29  
SCALE: 3/8"=1'-0"



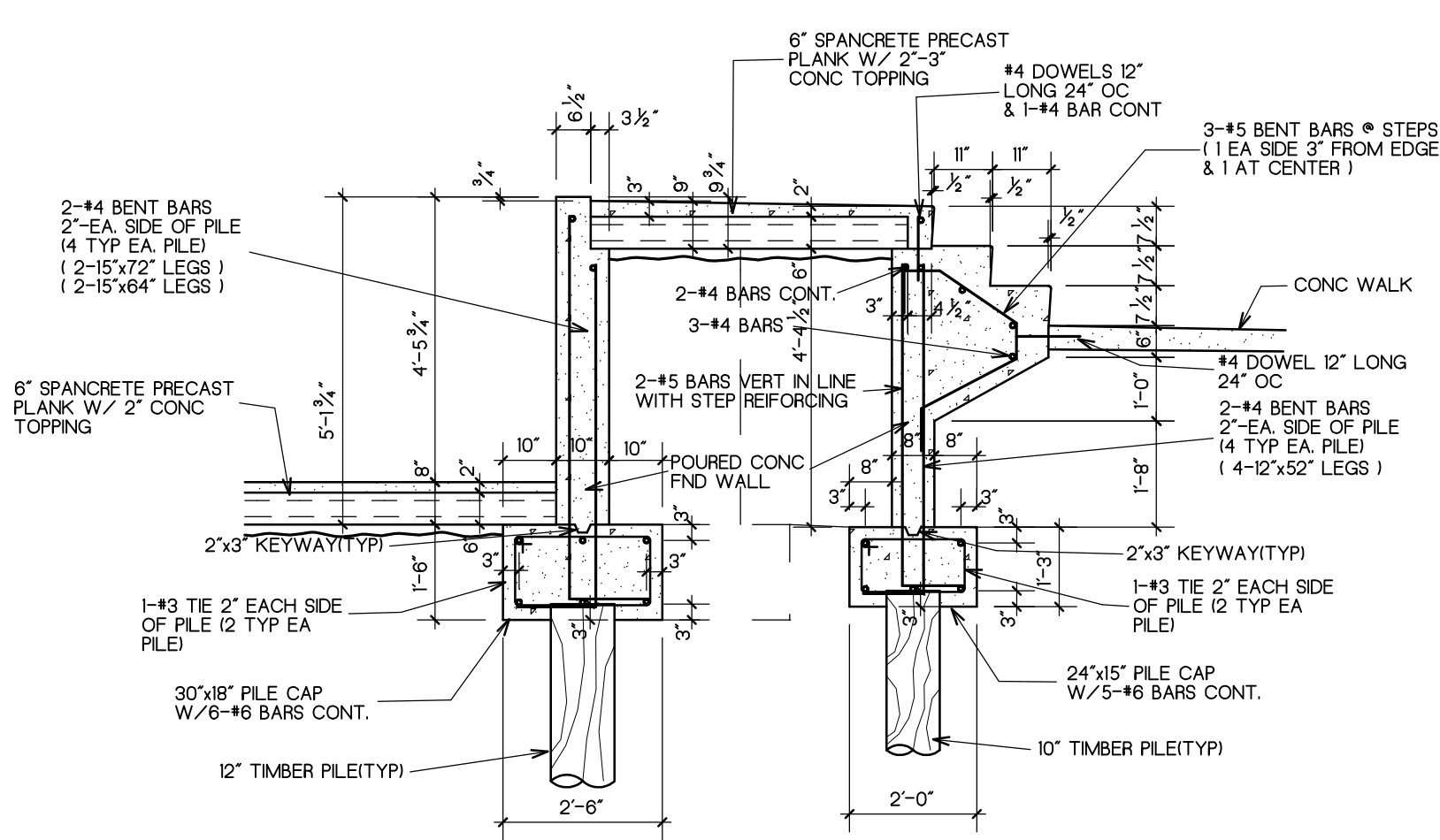
DETAIL D30  
SCALE: 3/8"=1'-0"



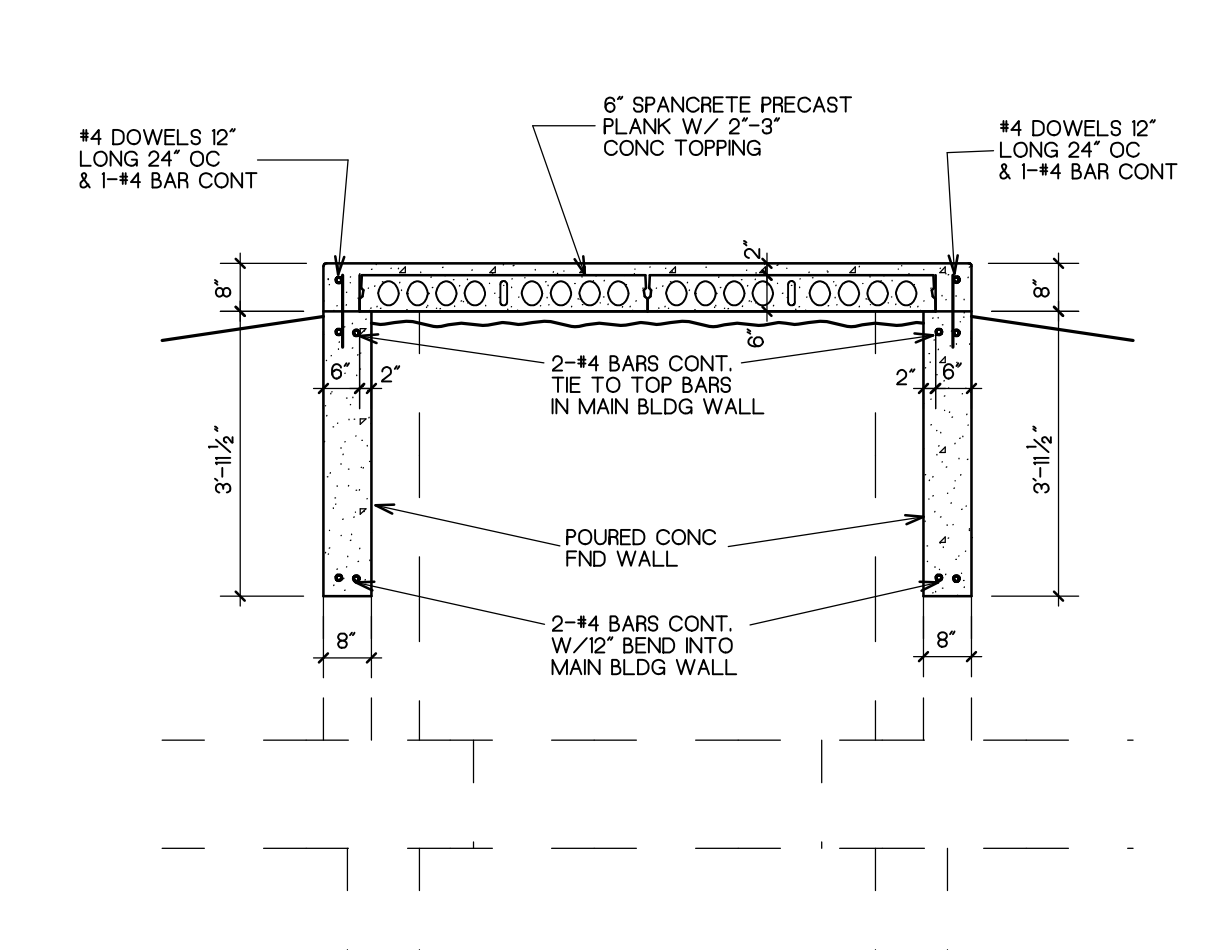
DETAIL D31  
SCALE: 3/8"=1'-0"



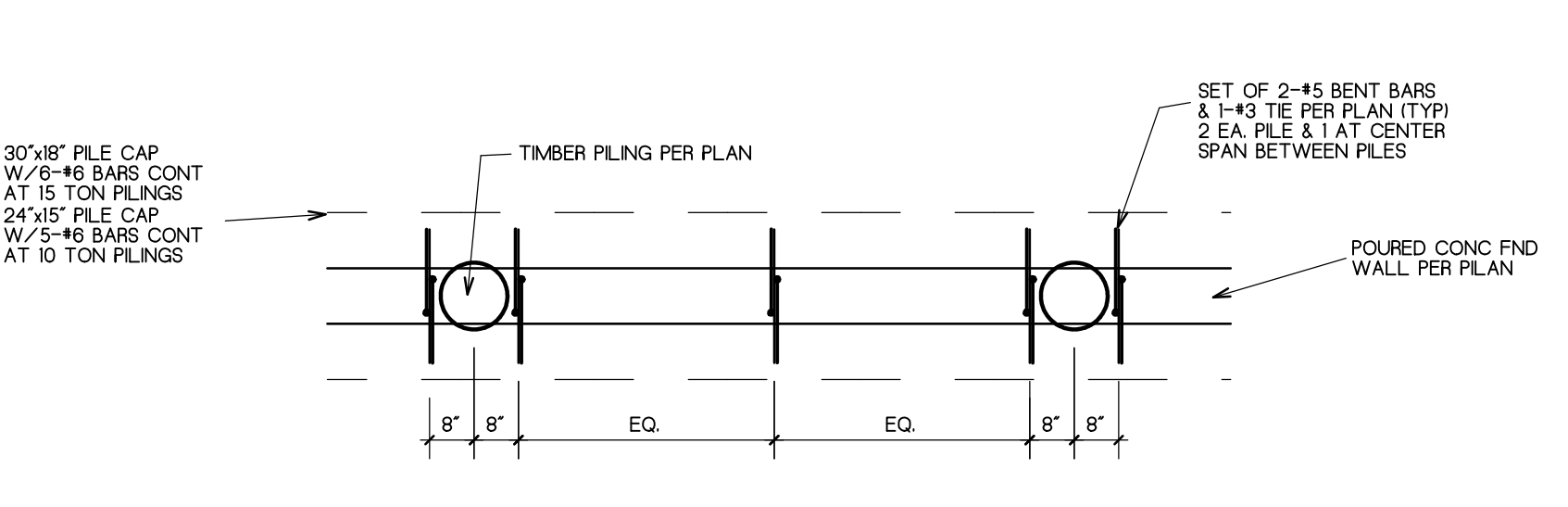
DETAIL D32  
SCALE: 3/8"=1'-0"



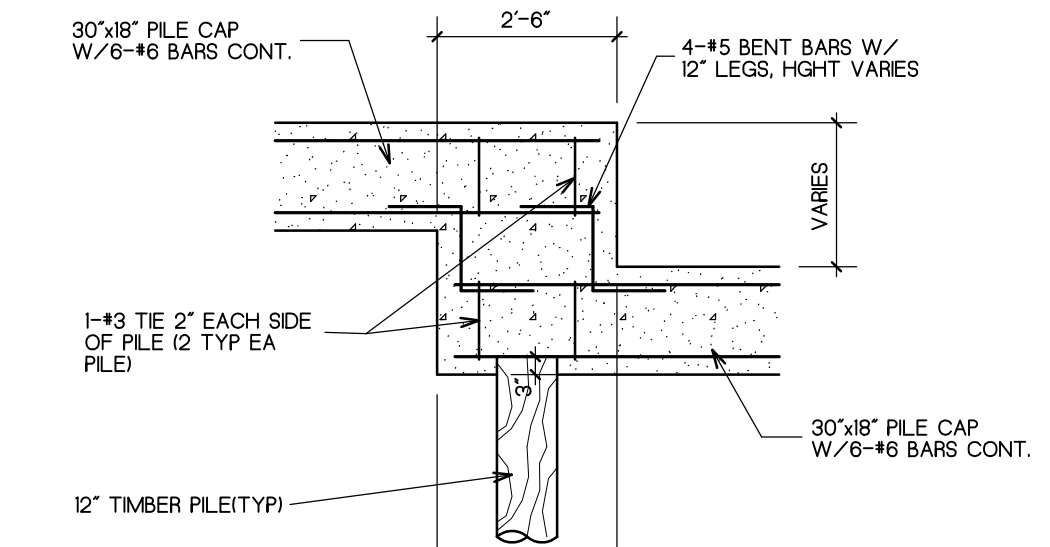
DETAIL D33  
SCALE: 3/8"=1'-0"



DETAIL D34  
SCALE: 3/8"=1'-0"



TYPICAL CAP / PILE PLAN  
SCALE: 3/8"=1'-0"



TYPICAL PILE CAP STEP  
SCALE: 3/8"=1'-0"

NOTE: SPLICE ALL TOP BARS AT MID SPAN AND BOTTOM BARS AT PILE SUPPORTS FOR ALL PILE CAP GRADE BEAMS.

2/23/2015 3:10pm C:\Projects\1315\131504\ARCHITECT\131504\_3\REVISED\_DRAWING\_PLANS\INDEX

- WORK ORDERED BY -  
SHODEN HOMES, LLC  
77 NORTH FIRST STREET  
GENEVA, IL 60134

**ROWHOMES OF FONTANA**  
A PLANNED DEVELOPMENT

DOUGLAS STREET (BLOCK 4)  
VILLAGE OF FONTAN-ON-GENEVA LAKE, WALWORTH COUNTY, WISCONSIN

(BUILDING NO. 2)  
**FOUNDATION DETAILS**

**FARRIS, HANSEN & ASSOCIATES, INC.**  
ENGINEERING - ARCHITECTURE - SURVEYING

7 RIDGWAY COURT P.O. BOX 437  
ELKHORN, WISCONSIN 53121

OFFICE: (262) 723-2098 FAX: (262) 723-5886

REVISIONS
FILE REVISIONS BS 02/16/15 FINAL FOR STATE SUBMITTAL BS 02/20/15

PROJECT NO. <b>9129</b>
DATE 09/16/14
SHEET NO. <b>9 of 13</b>